

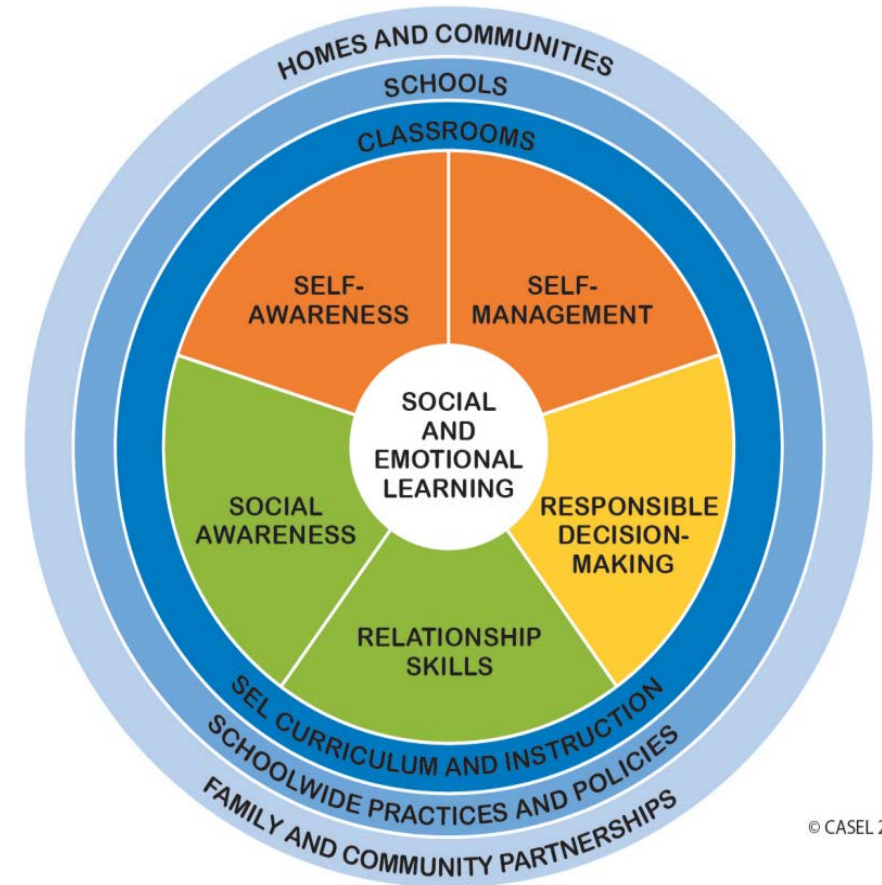
# Delaware Social Emotional Learning Collaborative

An Overview for the Delaware Community Foundation

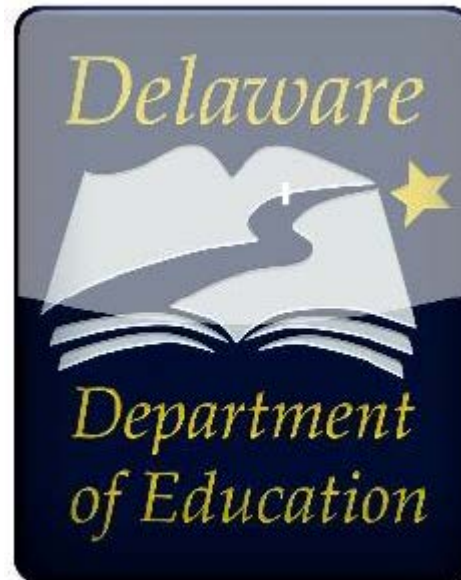
LaWanda Burgoyne, Capital School District

# What is Social Emotional Learning?

Social and emotional learning (SEL) is the process through which children and adults acquire and effectively apply the knowledge, attitudes, and skills necessary to understand and manage emotions, set and achieve positive goals, feel and show empathy for others, establish and maintain positive relationships, and make responsible decisions.



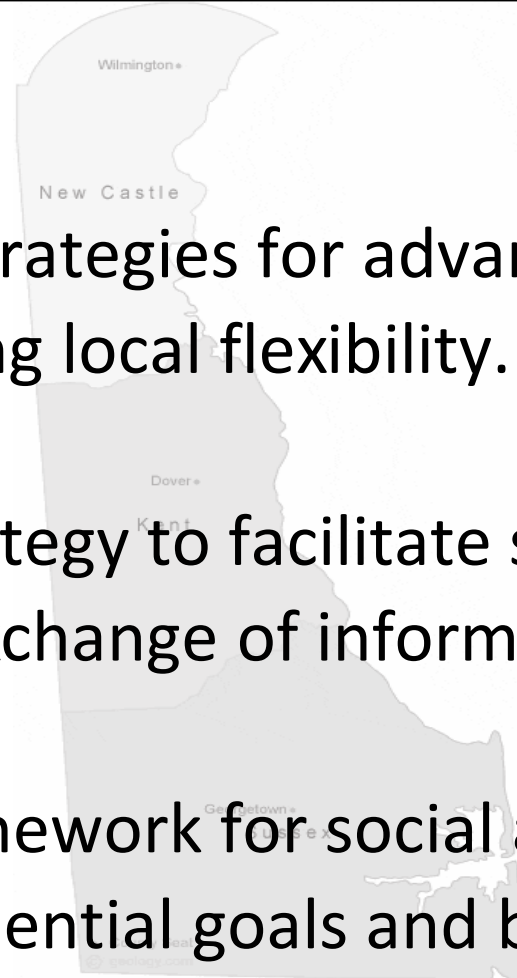
# How did the Collaborative Form?



# Delaware's Current SEL Goals

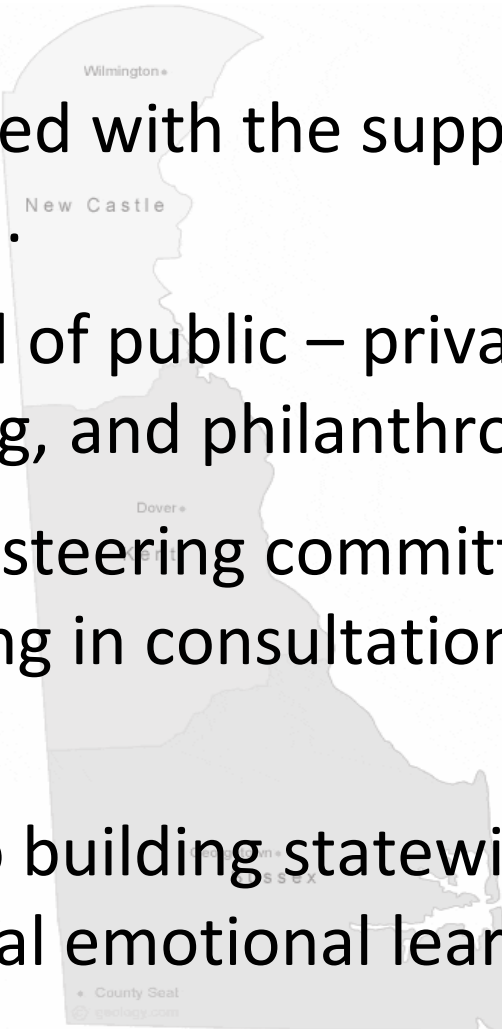
relationship to equity, and strategies for advancing statewide collaboration while preserving local flexibility.

- Develop communication strategy to facilitate stakeholder engagement, coalition building, and the exchange of information.
- Create a developmental framework for social and emotional competencies based on sequential goals and benchmarks.



# Accomplishments

- Landscape analysis completed with the support of the Rodel Foundation Teacher Council.
- Grassroots effort comprised of public – private partners representing the education, youth-serving, and philanthropic communities.
- Core team and cross sector steering committees meet monthly for problem solving and planning in consultation with CASEL national advisor.
- DOE dedicated a position to building statewide capacity for trauma informed practices and social emotional learning in November 2018.



# Next Steps

- ★ Design a framework for social and emotional competencies at the 2019 Summer Convening.
- ★ Support schools, districts, and out of school providers to pilot the framework.
- ★ Facilitate professional learning and the integration of SEL within existing multi-tiered systems of supports.
- ★ Create a state toolkit to provide resources for school leaders, staff, community partners, parents and students so we can join forces to advocate for conditions that foster SEL.

